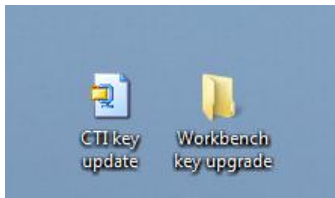


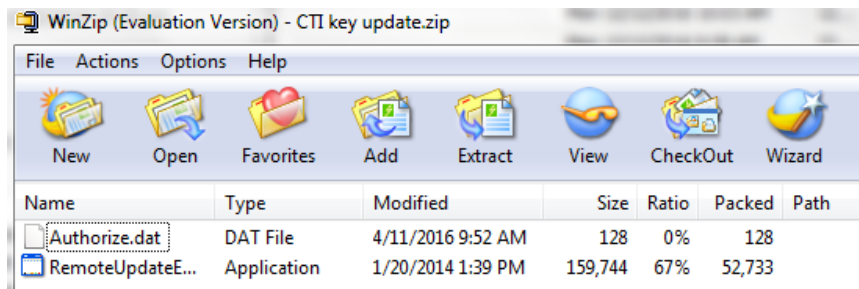


WORKBENCH KEY UPGRADE PROCEDURE

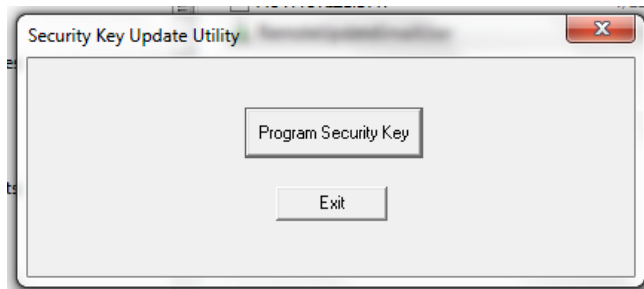
- (1) Create a new directory on your PC. (Desktop is fine)



- (2) Extract .zip file to newly made folder. (In this case, the folder is named “Workbench key upgrade.” (Ex: shows using WINZIP utility)



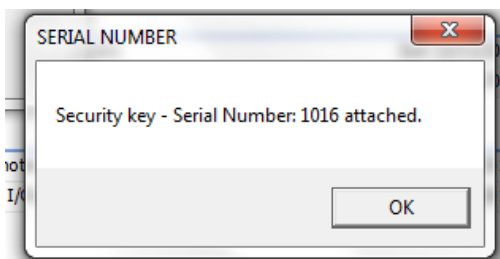
- (3) Run (execute) file named remoteUpdateEmailUser.exe
You should get a popup window like this:



- (4) Make sure key to be programmed is now plugged in to an available USB port on your PC. **IMPORTANT NOTE: Workbench must NOT be running during the key upgrade procedure.**

- (5) Click on “Program Security key”

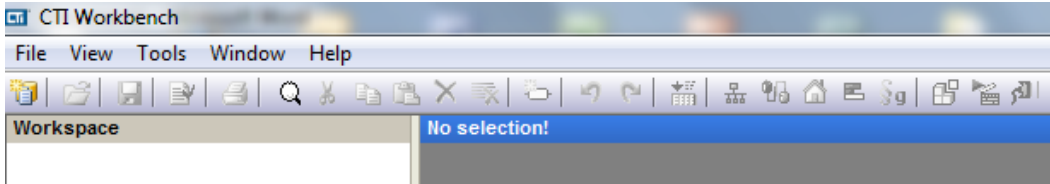
- (6) You will get a confirmation window of the s/n of the key to be upgraded.



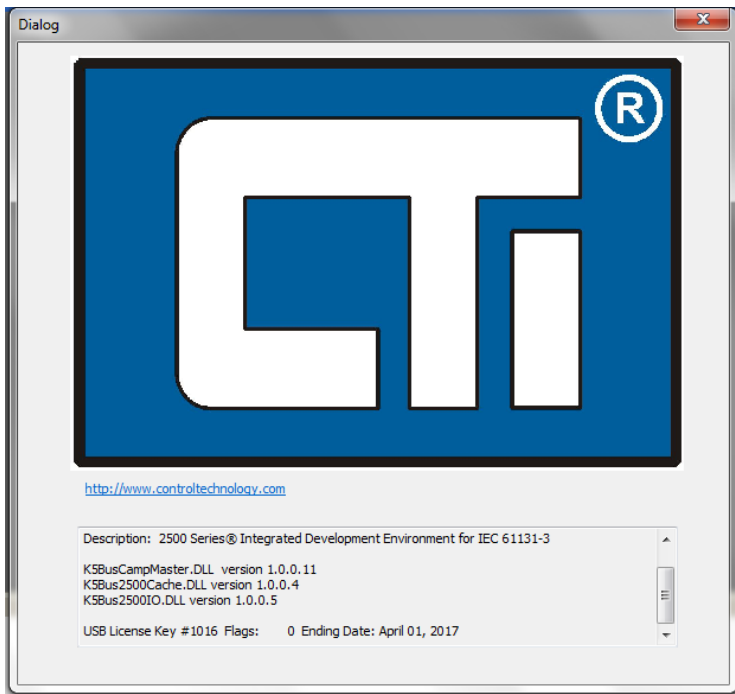
(7) If the process goes as planned, You will get a confirmation window confirming the process was done and your key upgrade process is complete.

Verification confirmation process

You can verify the date to which your newly upgraded key is now programmed to, by going into the help file within WORKBENCH software.



Click on “About” tab and the following dialog window will be shown.



Indicates date which the USB key will support s/w versions of WORKBENCH and earlier.
Note: If any release for WORKBENCH is released after this date, your USB key will not work with that version